



CHURCHILLS MANOR

by



STONEHOUSE

SPACES REDEFINED

INTRODUCTION

British architecture is renowned across the globe for its stunning and magnificent heritage. Period properties remain across the country however regrettably many of these once loved listed buildings have been left to fall in to a state of disrepair.

Stonehouse are building an enviable reputation for sourcing and acquiring these hidden gems and lovingly restoring and re-purposing them back to their former glory

Established in 2004 Stonehouse are building an enviable reputation for sourcing and acquiring these hidden gems and lovingly restoring and re-purposing them back to their former glory as residential dwellings. They provide a true 360 degree service on every project, from acquisition to design and cost management and ultimately the development and timely delivery of each apartment scheme.

The historical understanding and specialist skills required in their conservation and restoration work should never be underestimated. The team along with their passion for period and listed architecture collaborate their extensive experience and well honed skills to deliver something quite unique.

With particular emphasis being put on attention to detail and quality craftsmanship every development retains and restores as many period features as possible whilst encompassing the requirements for modern day living and in turn creating new history for generations to come.



CHURCHILLS MANOR

The Firs,
High Street Whitchurch Buckinghamshire



“A beautiful development of 6 apartments in the picturesque setting of Aylesbury Buckinghamshire, a building steeped in history and character.”



AYLESBURY

Aylesbury is a bustling market town located just north of the Chiltern Hills in Buckinghamshire, situated within the rich agricultural area known as the vale of Aylesbury.

Most of the older buildings in Aylesbury are found in the streets surrounding St Mary's Church. Largely Georgian in character, with some Tudor and Jacobean buildings, the Old Town is home to the National Trust's 15th Century Kings Head Coaching Inn, the Buckinghamshire County Museum with the Roald Dahl Children's Gallery and the 18th century Prebendal House.

Alongside the old traditional, Aylesbury offers modern shopping centres and has a fantastic selection of places to eat.

Aylesbury has enjoyed a renaissance in recent years, after the delivery of a range of regeneration projects to build on its reputation as a hub for retail, dining and leisure activities.

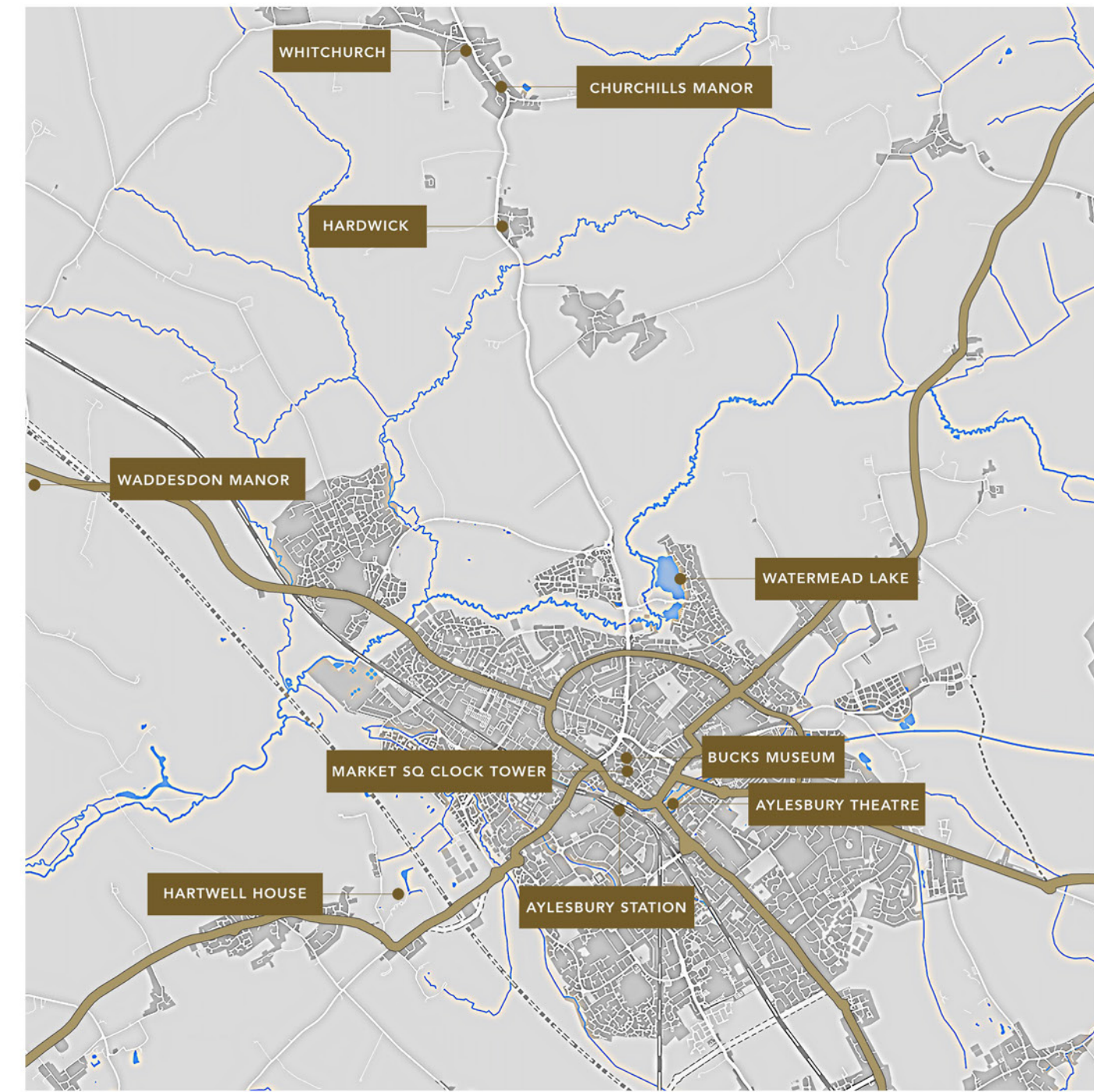


LOCATION

Churchills Manor located in the village of Whitchurch, is situated approximately 5 miles north of Aylesbury. Whitchurch is a thriving community with schools, churches and all the local amenities you might need. With nearly 1000 residents, Whitchurch is the largest village between the towns of Aylesbury and Winslow.

The village has a long history, dating back to the 12th century, which includes Bolbec Castle. The motte and bailey castle was illegally built for Hugh II de Bolbec, Lord of Whitchurch during the Anarchy of 1147 and following the build was criticised by Pope Eugene III. Oliver Cromwell was responsible for the Castles destruction during the English Civil War (1642 - 51). The surviving earthworks are a scheduled monument which can still be visited today.

Fair Alice's spring at the site of Bolbec Castle has to this day never stopped flowing, and is said to have healing properties!



Watermead Lake

Waterside Theatre

Market Sq Clock Tower

Bucks Museum

Aylesbury Train Station

Waddesdon Manor

Bicester Village

M1 Motorway

Luton Airport

London



8 Mins

11 Mins

11 Mins

12 Mins

13 Mins

17 Mins

31 Mins

36 Mins

40 Mins

1hr 30Mins



1hrs 33 mins

1hrs 33 mins

1hrs 36 mins

1hrs 38 mins

1hrs 40 mins

2hrs

-

-

-



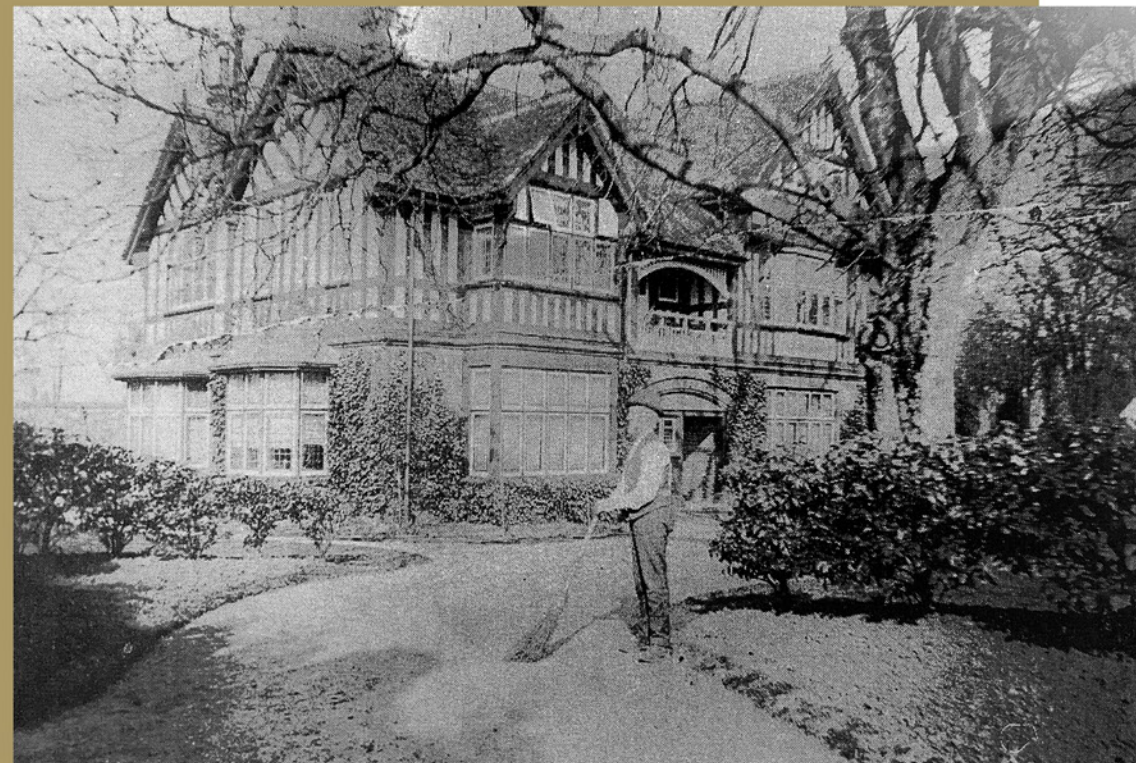
Churchills Manor

THE BUILDINGS HISTORY



A historical building that played a key part in World War II. Known as Winston Churchill's Toyshop, it was the HQ of a highly secret weapons research, development and manufacturing site which played a crucial role in the Allied victory.

The historic and world-famous building that was formerly known as Churchill's Toyshop.



Military Intelligence Research (c) was a division of Military Intelligence Research (MIR), which was a department of the War Office. It was originally based in London, however, after an air raid, it relocated to The Firs, which was the second home of a major, who was generous enough to allow for the repurposing of his house.

During World War II, 26 different devices were made there, including the 'Projector, Infantry, Anti-Tank' (PIAT) which was a British portable weapon that you could carry around that would release explosives against tanks.



INTERIORS

Churchills Manor is an exclusive development of 6 luxury apartments, situated in the historic and world-famous building that was formerly known as Churchills Toyshop.

Original features that have been refurbished and retained are now beautifully complimented with luxury kitchens with quartz work surfaces, opulent bathrooms, 100% wool carpets and high-end fixtures and fittings throughout.

“Every apartment has been thoughtfully designed so that living space is maximised whilst comfort is ensured”





FINISHING TOUCHES

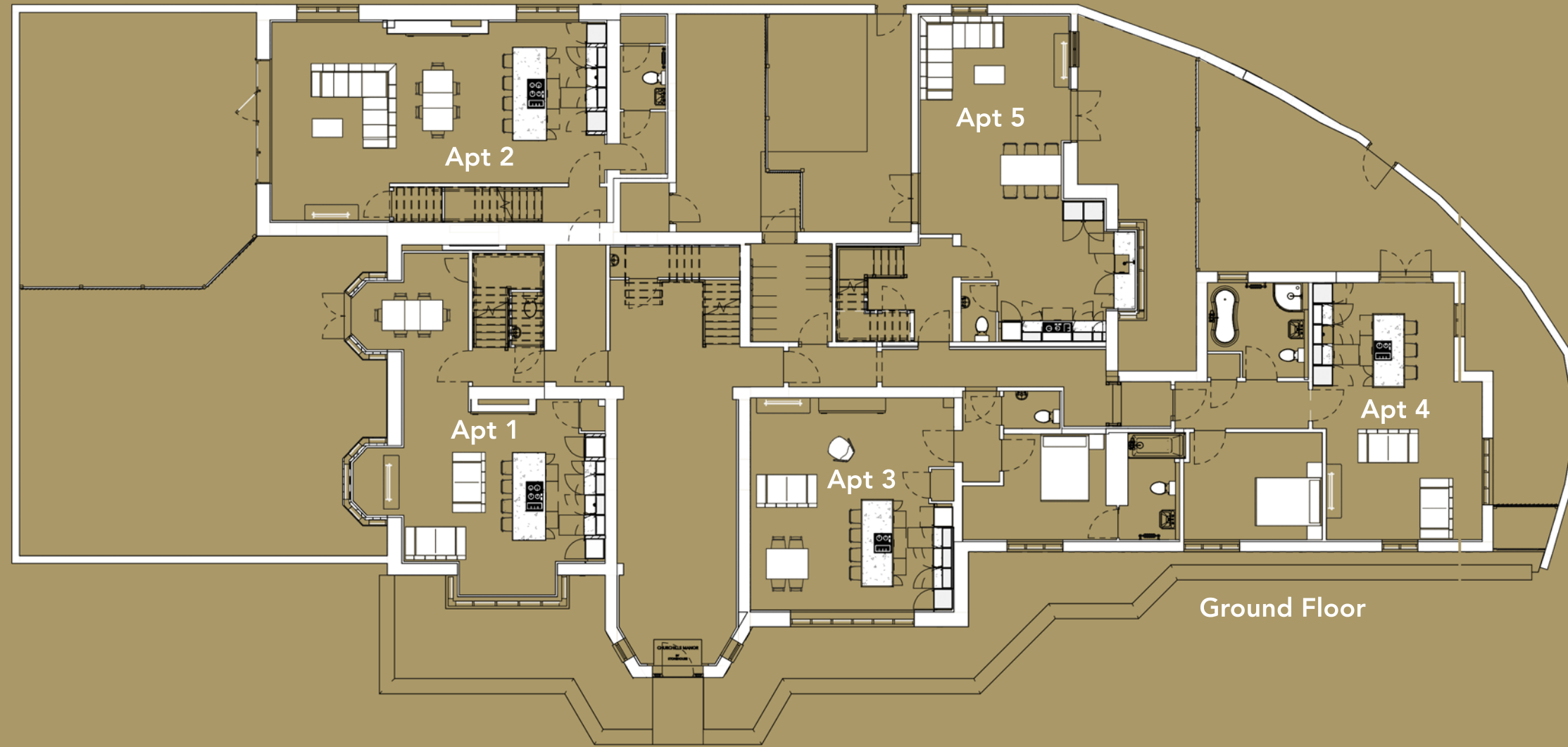
Aside from the history of the building and the wonderstruck thought of residing where Winston Churchill made many strategic decisions, the team worked tirelessly to ensure that the original features were repaired and retained to be enjoyed for many more years to come.

From the beautiful oak main staircase incorporating the timeless stained-glass window to the top of the first landing. Coupled with the refurbishment and use of the original wall panels, which can now be seen throughout the entire development.

luxury kitchens with quartz work surfaces, opulent bathrooms, 100% wool carpets and high-end fixtures and fittings throughout.



FLOOR PLANS



Apartment 1 - Duplex - 1437sq.ft/133 sq.m
3No Bedroom with garden (943 sq.ft)

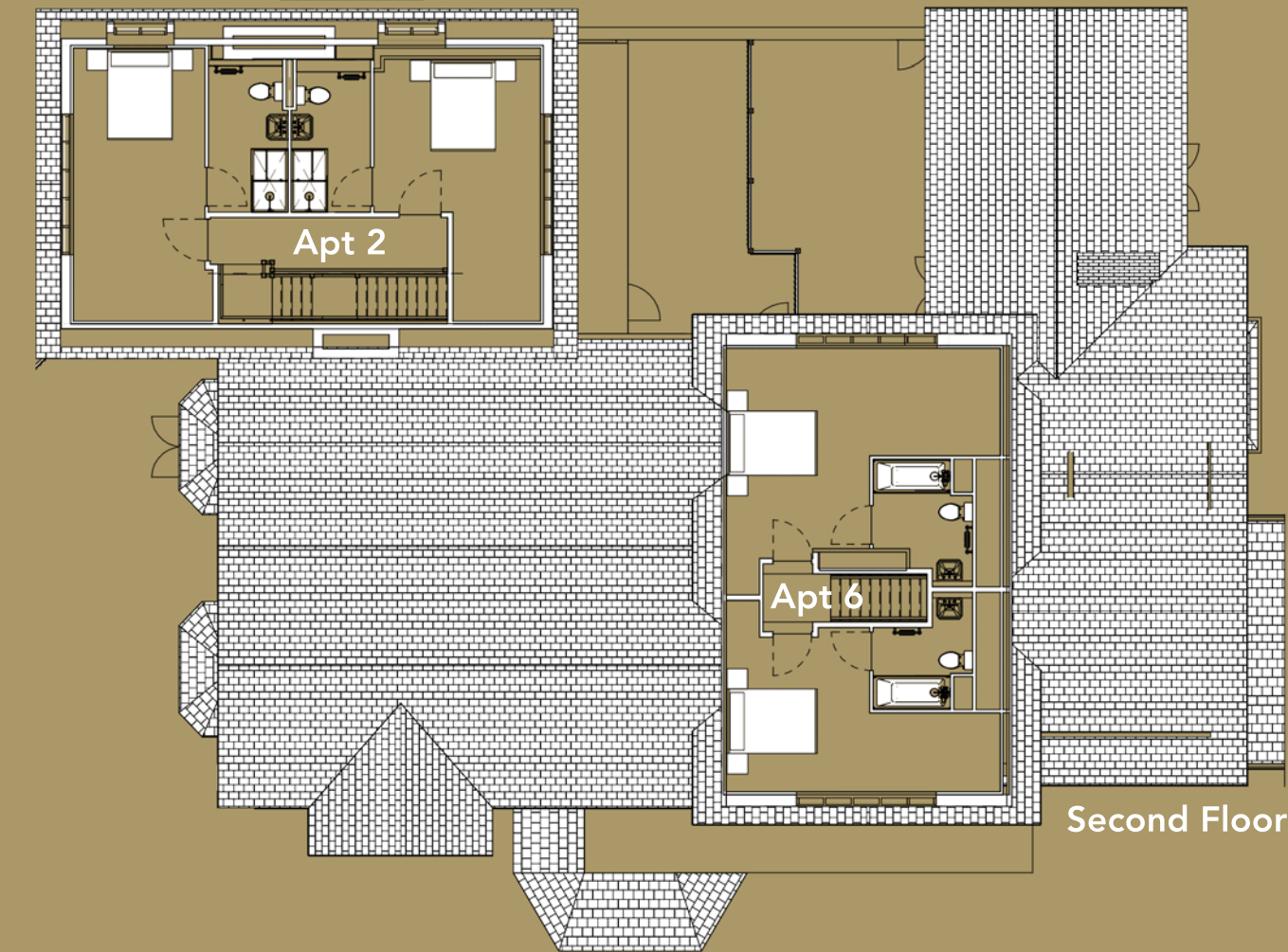
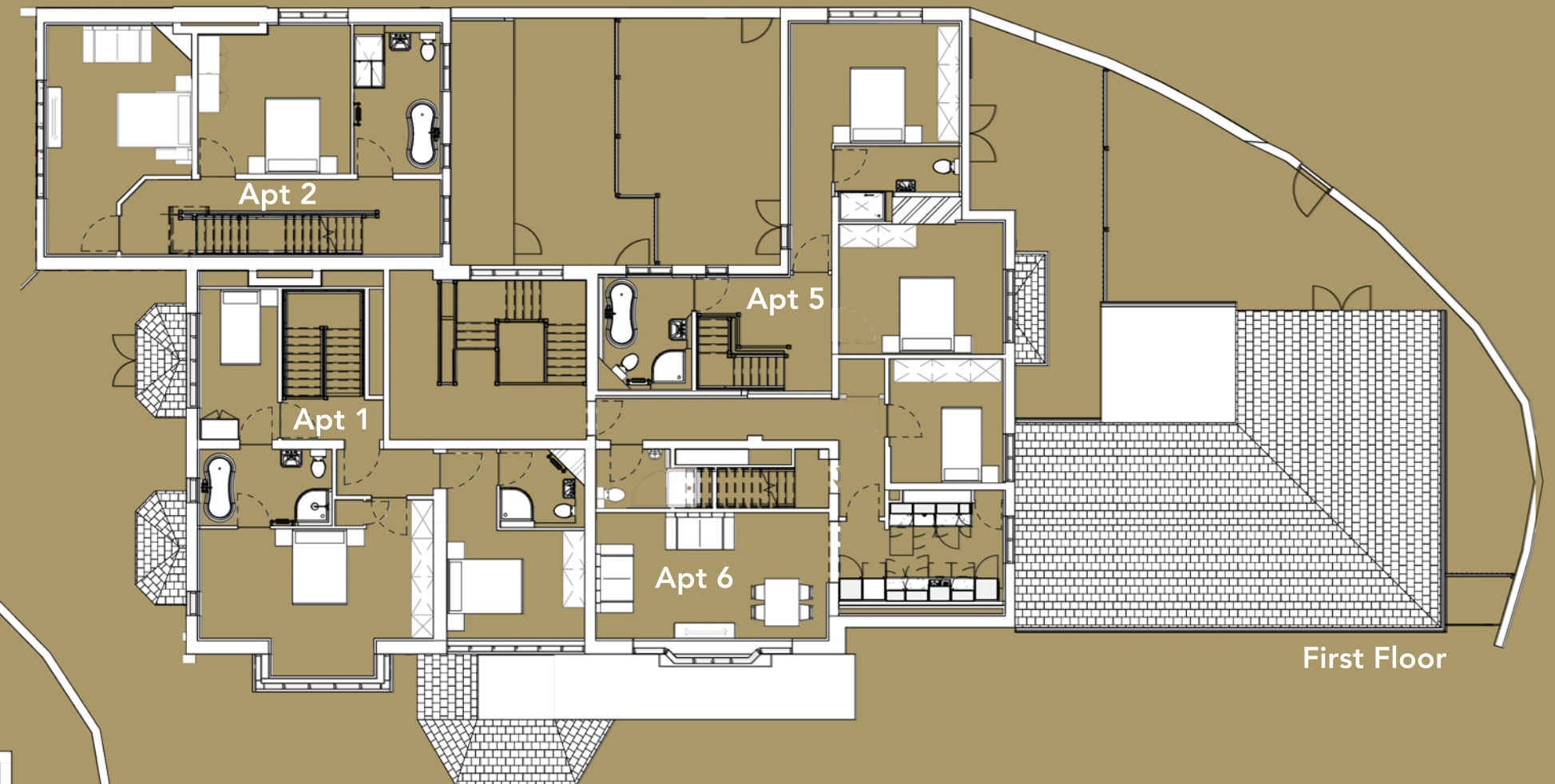
Apartment 2 - Triplex - 2113 sq.ft/196 sq.m
3No Bedroom with garden (603 sq.ft)

Apartment 3 - 685 sq.ft/64sq.m
1No Bedroom

Apartment 4 - 685sq.ft/64 sq.m
1No Bedroom with garden (525 sq.ft)

Apartment 5 - Duplex - 1264 sq.ft/117 sq.m
2No Bedroom with garden (557 sq.ft)

Apartment 6 - Duplex - 1409 sq.ft/130sq.m
3No Bedroom





STONEHOUSE

SPACES REDEFINED

Address: Building A, Home Farm, The Avenue, Apperley Bridge, BD17 7RH
Email: enquiries@stonehourealestate.co.uk Tel: 01274 612903 Web: www.stonehouseprojects.co.uk